

Hydraulic Interface Valve

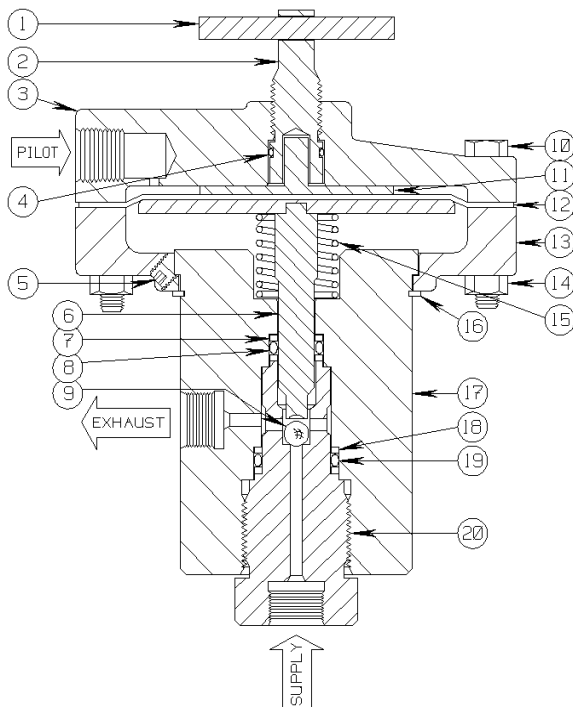
Diaphragm (150 PSI Max)

2-WAY NO, 1/4" HP (TYPE: F250C), .125 ORIFICE, 20,000 PSI W/MANUAL
OVERRIDE

Model 20HM34, 20HM35 H2S Service



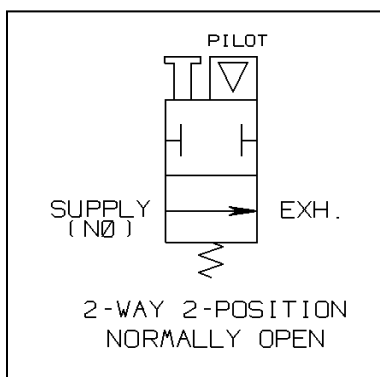
Conforms to the SEP category of the European Pressure Equipment Directive
Issue No. 97/23/EC



The **20HM34** is a two position, two-way normally open, Pilot Supply pressure operated, hydraulic flow control valve assembly. This assembly has 1/4" High Pressure Autoclave connections at the Supply and Exhaust control ports. It is designed to block incoming hydraulic Supply pressure automatically when relatively low Pilot Supply pressure is applied.

A loss of Pilot Supply pressure will open the hydraulic Supply (inlet) port to the Exhaust port and vent accumulated pressure upstream of the Supply port. Hydraulic Interfaces (Interface Valves) are generally used to control the open/close operating sequence of Surface Controlled Sub-Surface Safety Valves (SCSSV) or Surface Safety Valves (SSV).

The model 20HM34 can be provided with an optional manual Override Handle (shown) to close the internal hydraulic flow path (Supply to Exhaust) without the application of Pilot Supply pressure. This feature allows the SCSSV or SSV, to be opened (through pressurization of the operating hydraulic control circuit) for normal start-up operation or for maintenance/testing purposes.



PARTS LIST:

- | | |
|-----------------------|------------------------|
| 1. Cross Pin | 11. Diaph. Protector |
| 2. Override Plunger | 12. Diaphragm * |
| 3. Upper Housing | 13. Lower Housing |
| 4. O Ring* | 14. Hex Nut * |
| 5. Soc. Set Screw * | 15. Spring * |
| 6. Plunger/Plate | 16. Spiral Ring * |
| 7. Back Up Ring (2) * | 17. Valve Body |
| 8. O Ring * | 18. Back Up Ring (2) * |
| 9. Ball* | 19. O Ring * |
| 10. Hex Head Bolt | 20. Seat Retainer * |

* Indicates parts included in a Repair Kit

Sigma Model Number 20HM34

2-WAY NO, 1/4" HP (TYPE: F250C), .125 ORIFICE, 20,000 PSI W/MANUAL OVERRIDE

Product Specifications

Flow Control Application: Normally Open

Control Function: Two-Way

Pressure Rating Body (Control Ports): 20,000 PSI maximum (1379 bar)

Seal Material: Viton

Operator (Pilot Cap): Diaphragm Assembly 150 PSI (10.34 bar) maximum - 30 PSI (2.06 bar) minimum

Instrument Supply Media for Operator (Pilot Cap): Pneumatic / Hydraulic

Pilot Port Rotation (Orientation) Capability: Full Turning Radius of 360°

Manual Override Handle: Rotating Screw Type

Connection Size (Body): 1/4 HP F250C Autoclave Supply, Exhaust
1/4-18 Female N.P.T. Pilot port

Wetted Component Material (Metal): 316 Stainless Steel and 17-4PH SS

Panel Mount: No

Mounting Bracket Available: 20H26 Bracket

Pilot Supply Operating Ratio: 625 to 1

Orifice: .125 Diameter **Cv Factor:** .20

Weight: 9.0 Lbs.

Operating Temperature: -20° F to +250° F (-29° C to +121° C)

Overall Dimensions: 6-1/4 Height x 4-5/8 Pilot Head Diameter (15.88 cm Height x 11.75 cm PHD)

Pressure Equipment Directive (PED): This product conforms to the SEP Category of the European P.E.D.

Installation and Maintenance Instructions:

This hydraulic interface valve may be mounted using a mounting bracket or may be suspended by the plumbing or tubing runs to the individual ports as labeled in the attached drawing. Sigma recommends the use of appropriate thread sealant for each port connection.

Shelf Position Port Status

Pilot	Pilot Supply Inlet (Pneumatic On/Off Operating Pressure)
Supply	Inlet Supply Open to Exhaust
Exhaust	Hydraulic Fluid Return to Reservoir (Storage Tank)

Repair Kit Information

Repair Kits contain all of the Seals and other components typically replaced when repairing the assembly. In order to maintain optimum operating control function.