

HLR 7810-3 Manual Reset Relay (PUSH-TO-RESET)

Two position, three way Normally Closed, panel mounted, pilot pressure operated manual reset relay with a Latch Pin assembly and HLR 8500 Indicator. It is designed to quick exhaust the control pressure whenever the pilot supply pressure decreases significantly or if the Indicator is pulled outward as shown.

**Design Features:**

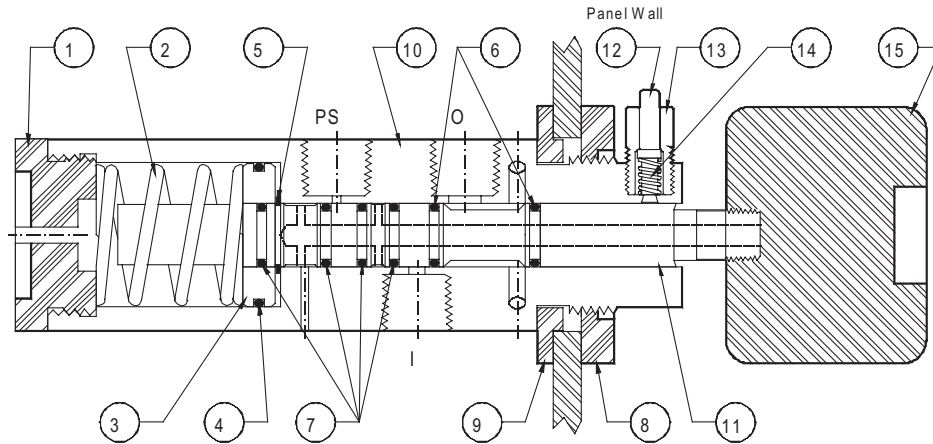
Dimensions: 1.500" Dia. X 7.500" L.

Pilot Supply Pressure - 30 PSI Min., 125 PSI Max.

Supply Pressure - 200 PSI Max.

Connections: 1/4" - 18 NPT

Weight: 2.5 lbs.



BILL OF MATERIAL

ITEM	PART NAME	PART NUMBER	MATERIAL
1.	Retainer	7817MD	31655
2.	Spring	1.095X1.25X62	302SS
3.	Piston	7813	316SS
4.	O-Ring	AS-022V75	Viton
5.	Retainer Rings (2)	.500 ERR	302SS
6.	O-Rings (2)	AS-012V95	Viton
7.	O-Rings (4)	AS-012V75	Viton
8.	Nut	7816	Delrin
9.	Panel Jam	7818A	Delrin
10.	Body	7811	316SS
11.	Stem	7812	316SS
12.	Pin	7815B	316SS
13.	Cap	7814A	316SS
14.	Spring	.210X.375X22	302SS
15.	Indicator	HLR 8500	316SS

OPERATION NOTES

To operate with pilot supply Pressure, push indicator inward.

To operate without pilot supply Relayed pressure (By-Pass), push Indicator inward, depress Pin (item #12). Pin will automatically release when pilot supply is applied.

Other Models of the HLR 7810 Series Manual Reset Relay include:

HLR 7810-4 - Shell Exploration and Production (GOM)

HLR 7810-5 - R/G Indicator without Latch Pin

HLR 7810A - Black Delrin Knob

HLR 7810A6 - Black Delrin Knob without Latch Pin

HLR 7810A7 - Black Knob, Universal Ports (threaded exhaust)

HLR 7810AB - Black Knob, suitable for hydraulic service

HLR 7810B3 - R/G Indicator, suitable for hydraulic service

HLR 7810-3EXPS - SPDT explosive proof switch.